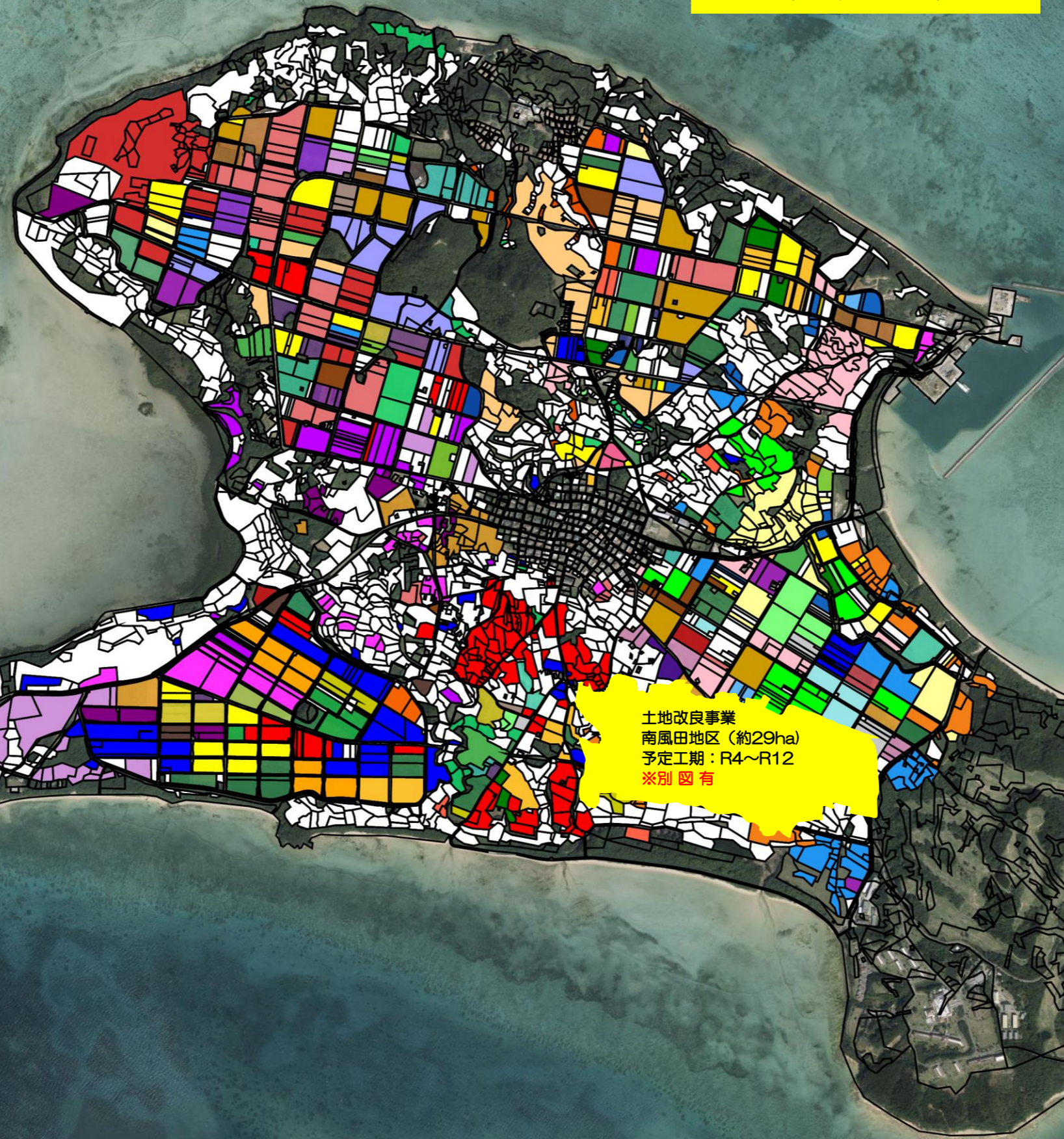


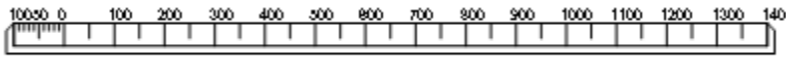
令和7年度-目標地図
(小浜地区)

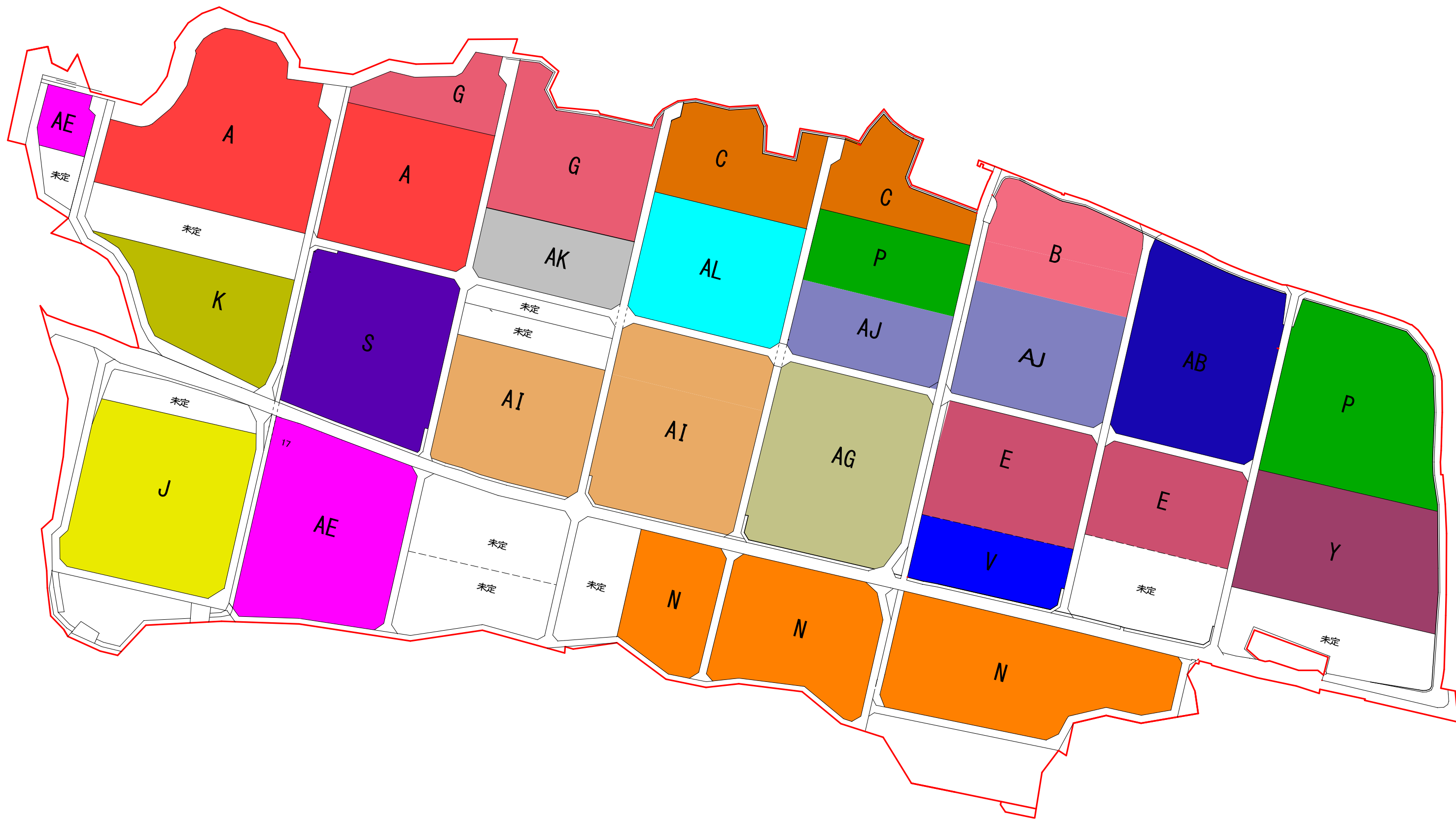


土地改良事業
南風田地区(約29ha)
予定工期: R4~R12
※別図有

A	AA	BB
B	AB	BC
C	AC	BD
D	AE	BE
E	AF	BF
F	AG	BG
G	AH	BH
H	AI	BI
I	AN	BK
J	AO	BL
K	AP	BM
L	AQ	BN
M	AR	BO
N	AS	BP
P	AT	BQ
Q	AU	BR
R	AV	BS
S	AX	BT
T	AY	BU
U	AZ	BV
V		BW
W		BY
X		検討
Y		
Z		

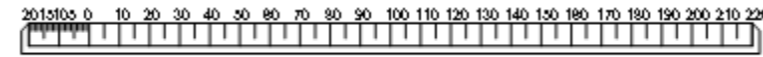
縮尺 1 : 15000



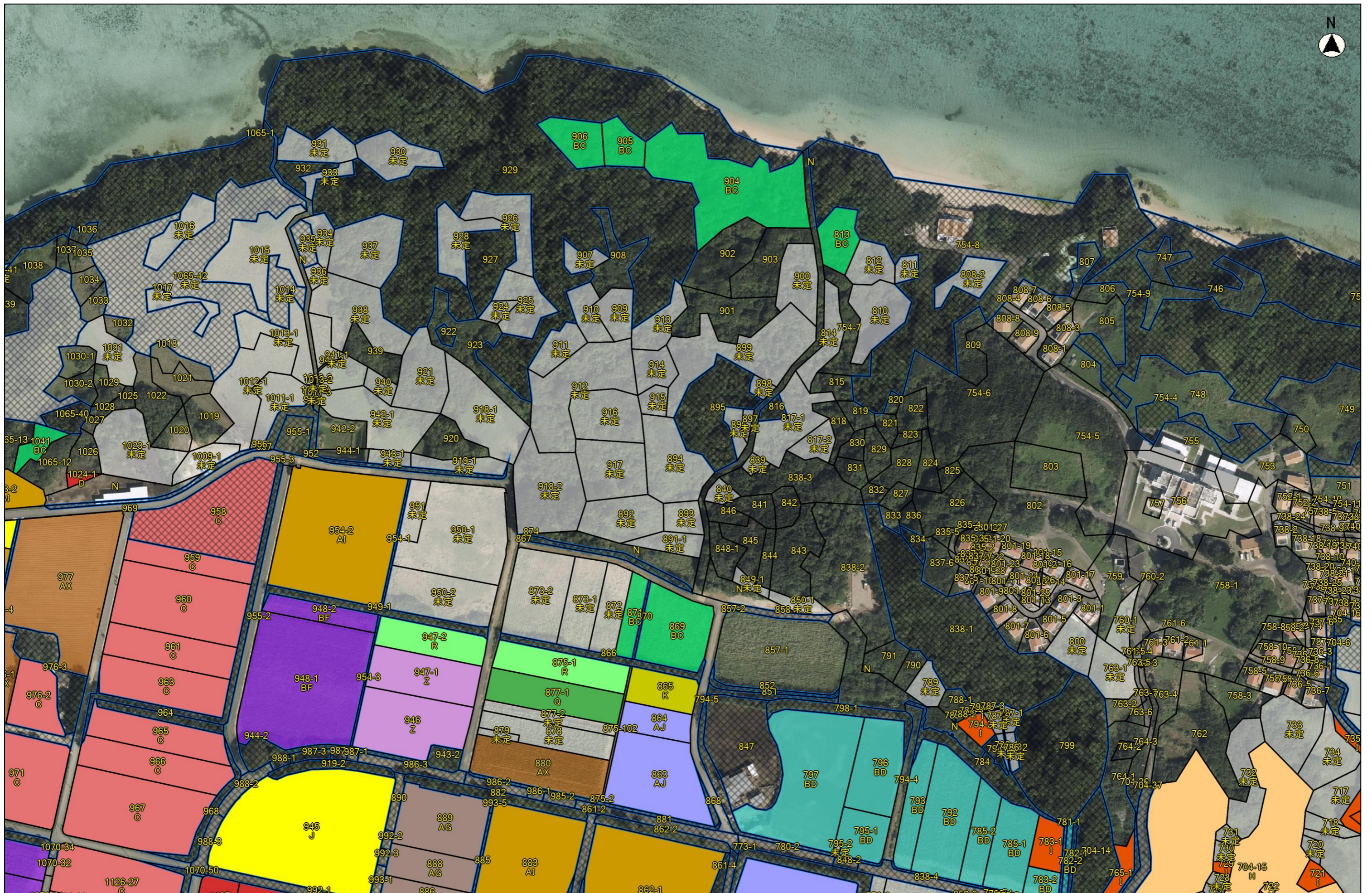




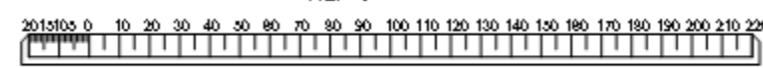
縮尺 1 : 2500



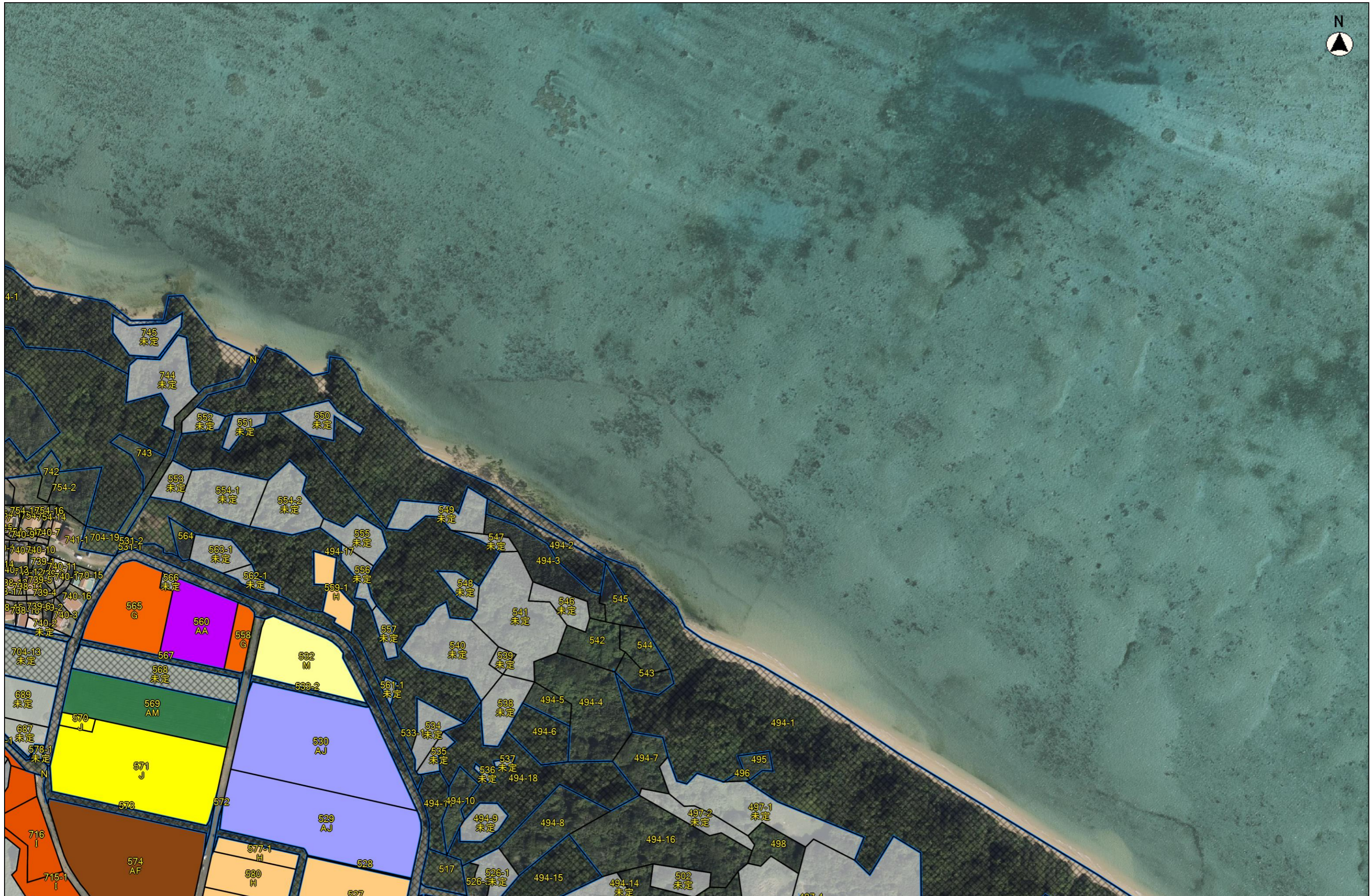
令和7年度-目標地図（小浜地区）②



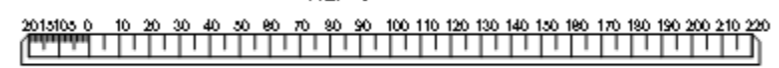
縮尺 1 : 2500



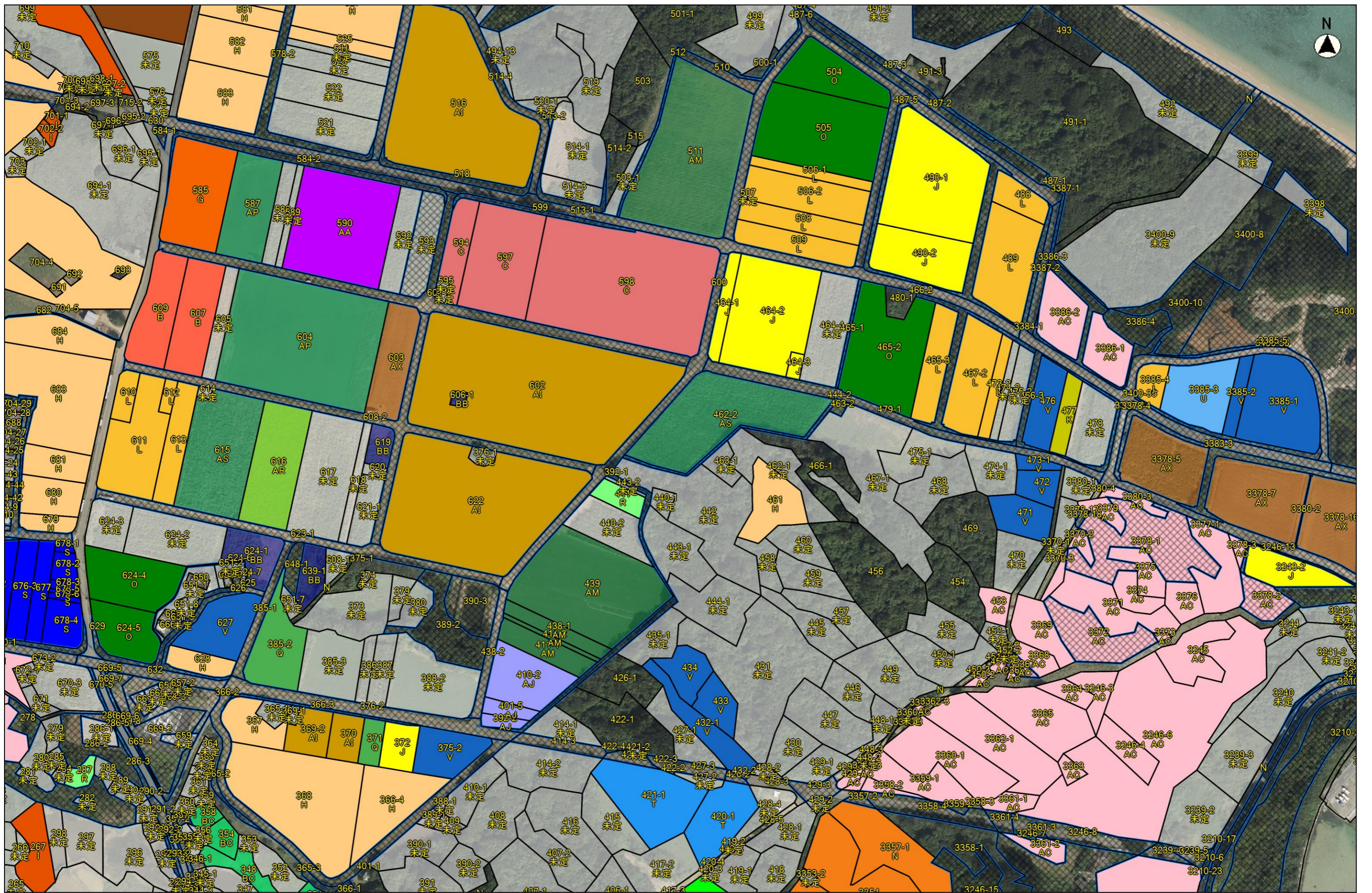
令和7年度-目標地図 (小浜地区) ③



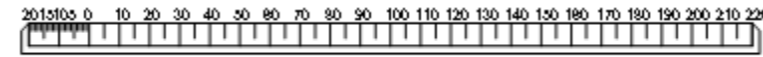
縮尺 1 : 2500



令和7年度-目標地図 (小浜地区) ④



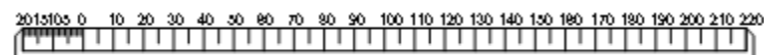
縮尺 1 : 2500



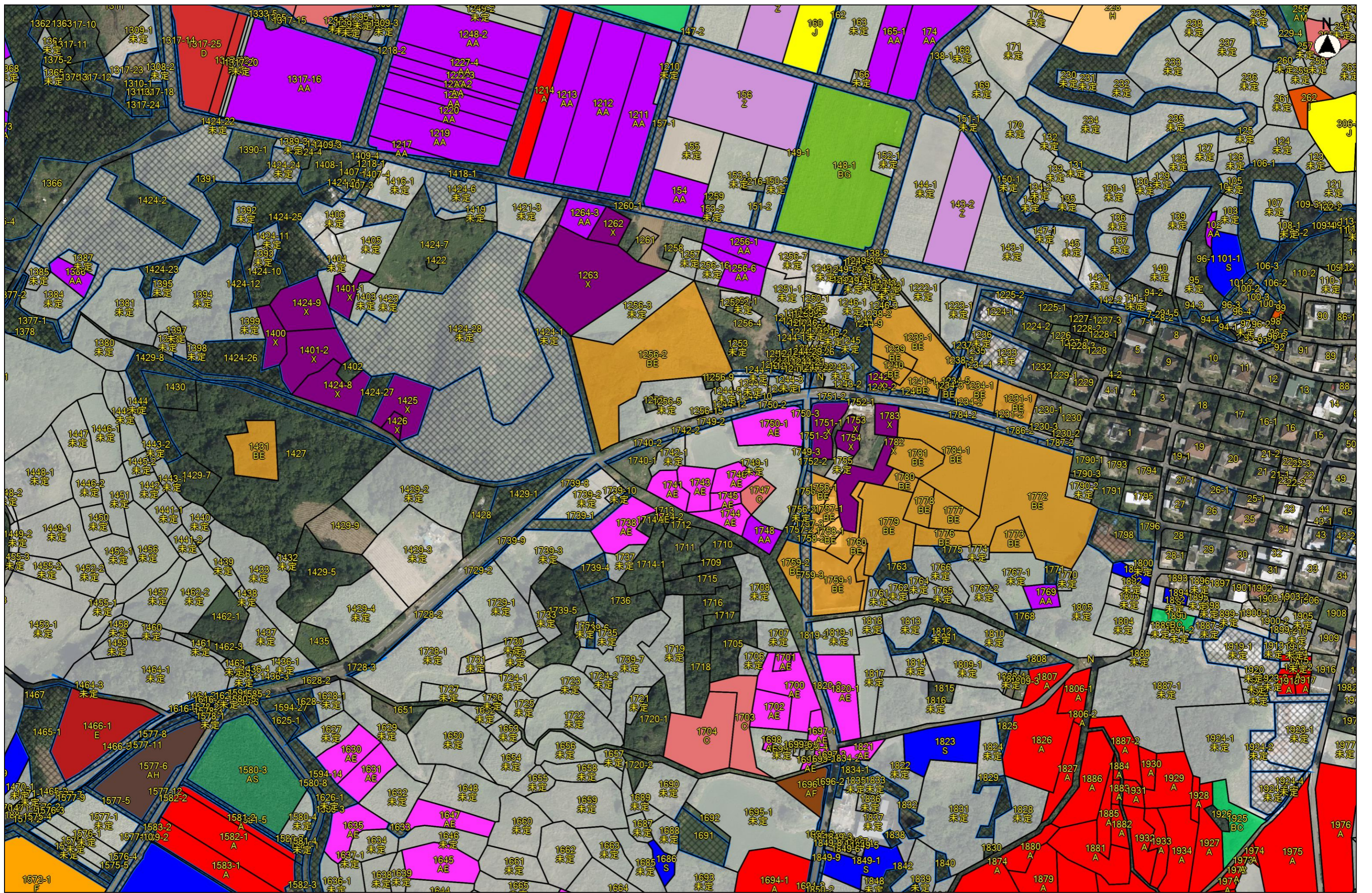
令和7年度-目標地図 (小浜地区) ⑩



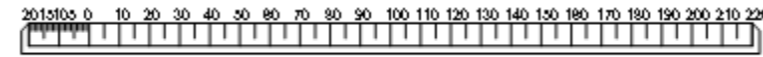
縮尺 1 : 2500



令和7年度-目標地図 (小浜地区) ⑭



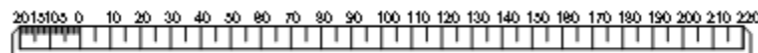
縮尺 1 : 2500



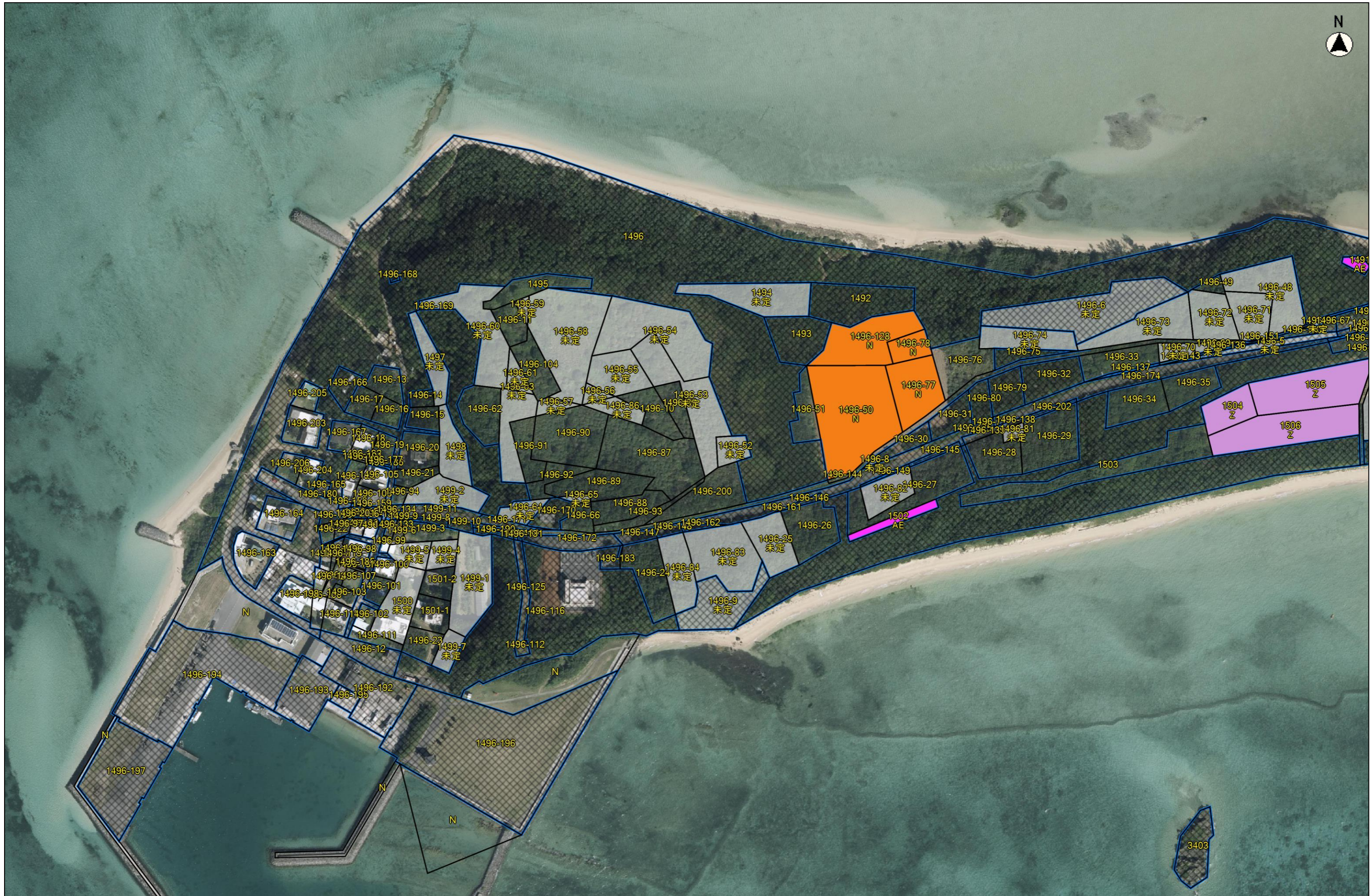
令和7年度-目標地図 (小浜地区) ⑮



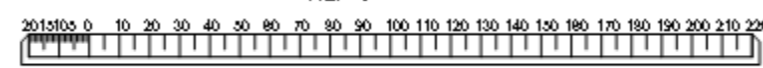
縮尺 1 : 2500



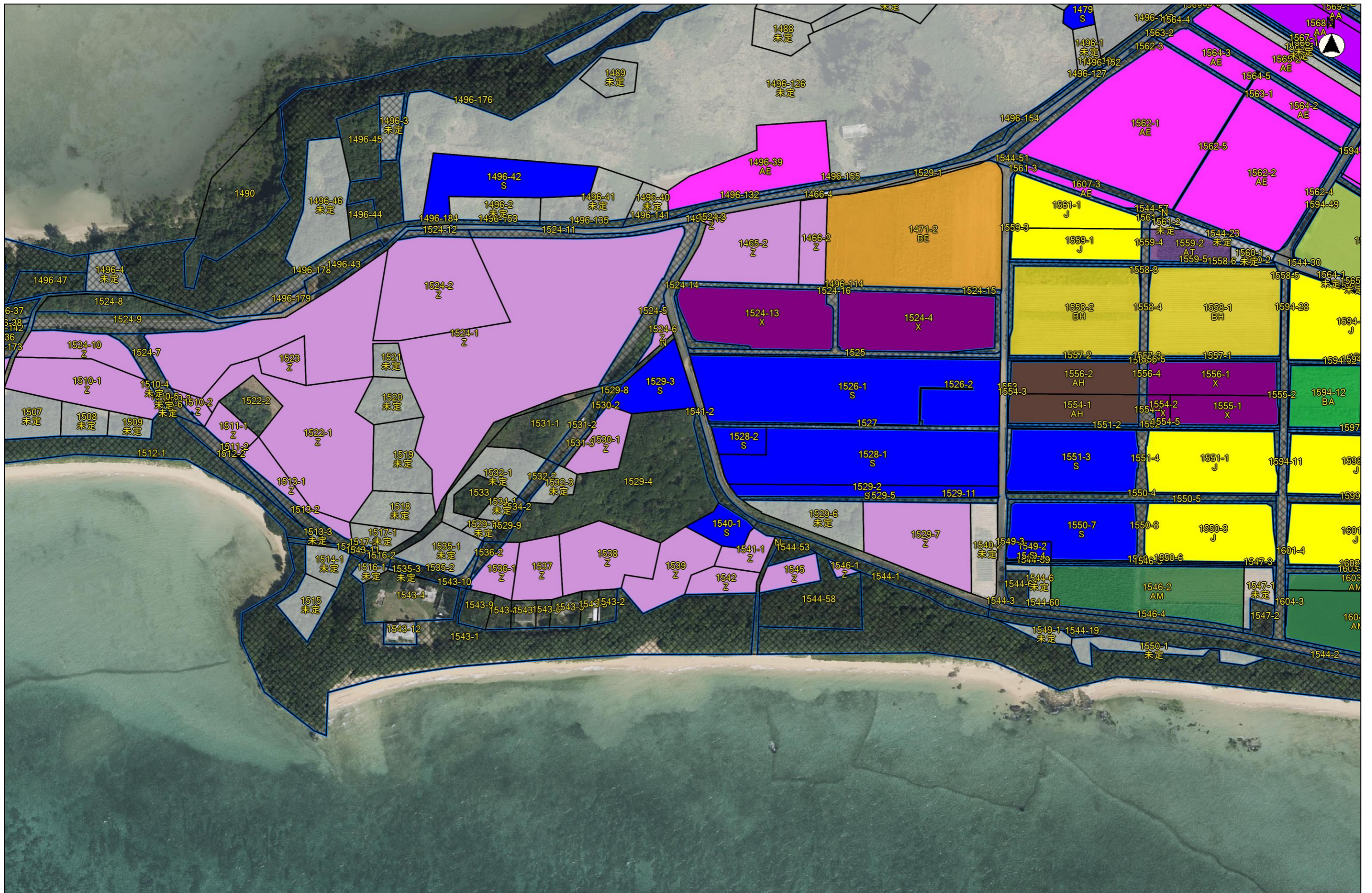
令和7年度-目標地図 (小浜地区) ⑰



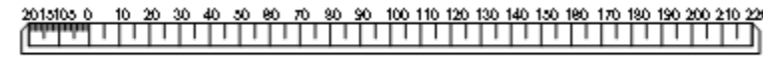
縮尺 1 : 2500



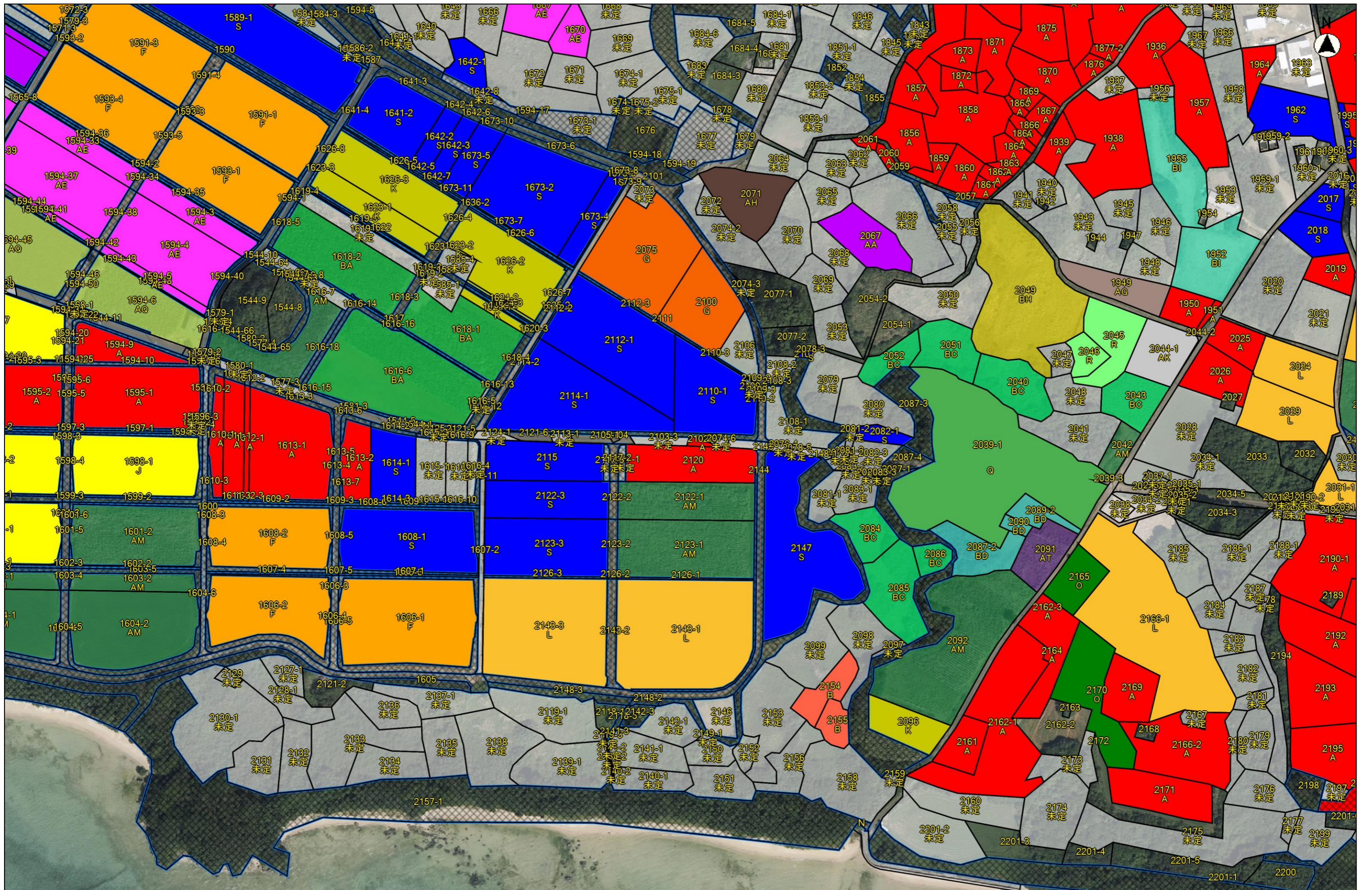
令和7年度-目標地図 (小浜地区) ⑱



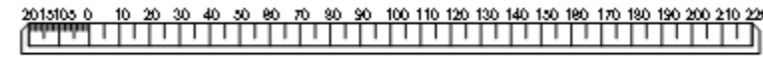
縮尺 1 : 2500



令和7年度-目標地図 (小浜地区) ⑳



縮尺 1 : 2500

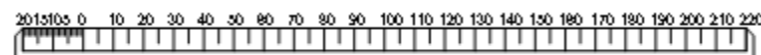


令和7年度-目標地図 (小浜地区) ②1



土地改良事業
 南風田地区（約29ha）
 予定工期：R4～R12
 ※別図有

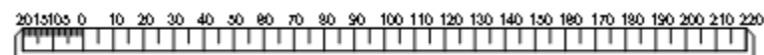
縮尺 1 : 2500



令和7年度-目標地図（小浜地区）②



縮尺 1 : 2500



令和7年度-目標地図 (小浜地区) ⑳